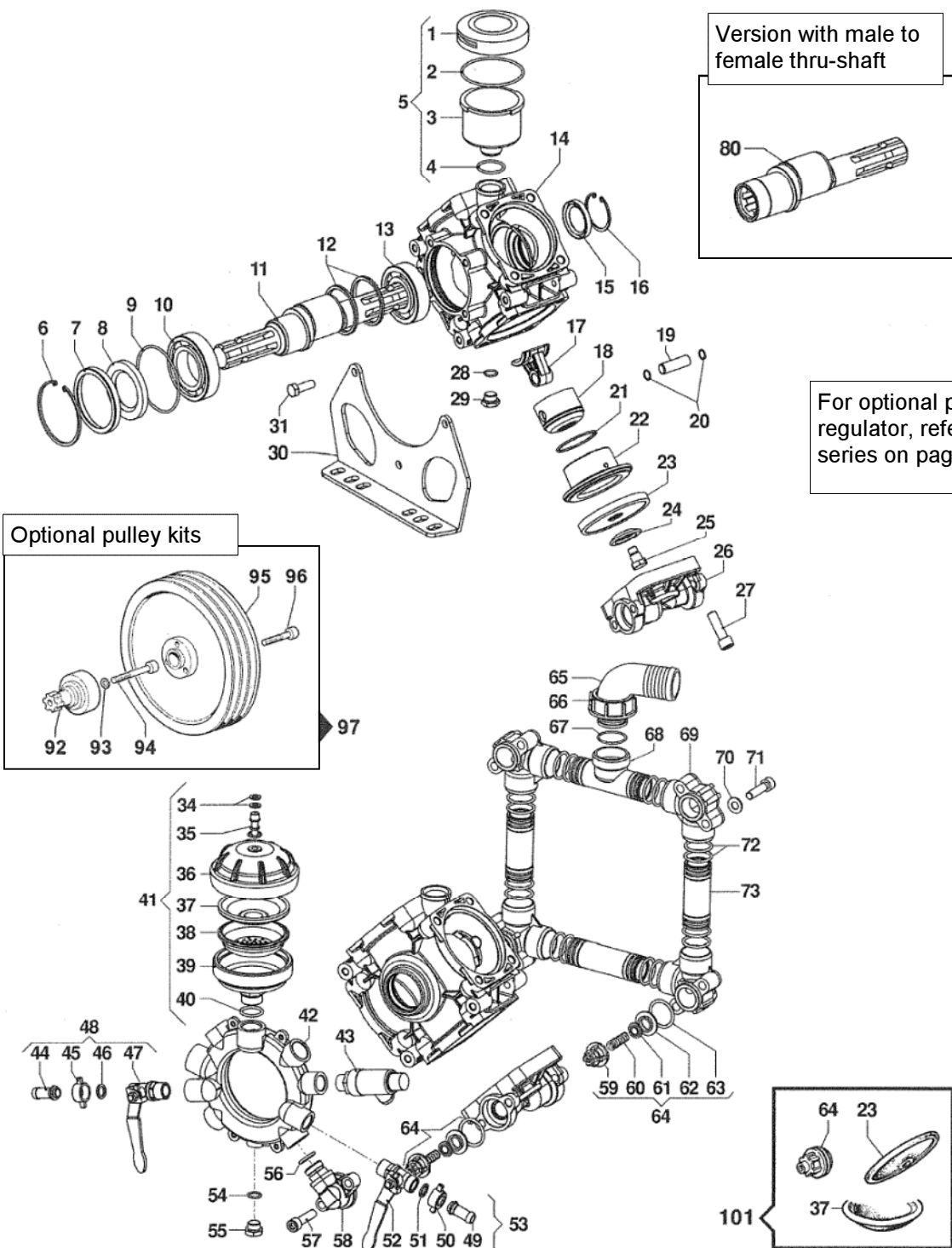


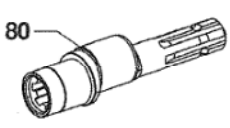


# IDS960

IDS960

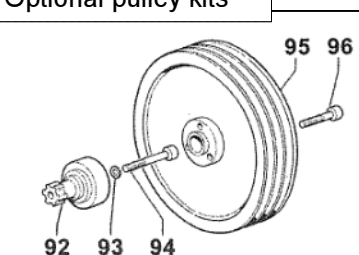


Version with male to female thru-shaft



For optional pressure regulator, refer to VRS series on page 61.

Optional pulley kits



PRICES SUBJECT TO CHANGE WITHOUT NOTICE.

#	PART #	DESCRIPTION	NOTE	QTY
1	0402.0143.00	CAP		1
2	1210.0373.00	O-RING	3,53x73,04	1
3	0421.0012.00	OIL CUP		1
4	1210.0002.00	O-RING	2,62x20,8	1
5	1208.0015.00	VOLUMETRIC COMPENS. KIT		1
6	3020.0002.00	RETAINING CLIP	90	1
7	0009.0345.00	RING		1
8	0019.0125.00	OIL SEAL	50x80x8	1
9	1210.0225.00	O-RING	2,62x88,58	1
10	0438.0041.00	BALL BEARING	50x90x20	1
11	0001.0558.00	THROUGHSHAFT	1"3/8 M-M	1
12	0010.0021.00	CONNECTING ROD RING	68x59x5,5	2
13	0438.0012.00	BALL BEARING	35x80x21	1
14	0403.0171.00	PUMP CRANKCASE		1
15	0019.0073.00	OIL SEAL	35x52x7	1
16	3020.0013.00	RETAINING CLIP	52	1
17	0205.0073.00	CONNECTING ROD ASSEMBLY		1
18	2409.0067.00	PISTON	59	4
19	3011.0021.00	CONNECTING ROD PIN	14x47,5	4
20	3020.0029.00	RETAINING CLIP	14	8
21	0020.0008.00	COMPRESSION RING	58x2x2,4	4
22	0400.0090.00	PISTON SLEEVE	58x8,9	4
23	1800.0088.00	DIAPHRAGM	BUNA	4
	1800.0096.00	DIAPHRAGM	DESMOPAN	4
	1800.0095.00	DIAPHRAGM	VITON	4
24	0602.0010.00	DISC		4
25	3605.0005.00	DIAPHRAGM HOLDER SCREW	M12x1,5	4
26	3218.0378.00	PUMP MANIFOLD		4
27	3609.0189.00	SCREW	M12x40	16
28	1210.0044.00	O-RING	2,62x9,93	1
29	3200.0010.00	PLUG	1/4 GAS	1
30	2400.0109.00	PUM MOUNTING BRACKET		2
31	3607.0220.00	HEXAGONAL SCREW	M10x30	6
34	1209.0033.00	GASKET	14x7,5x3	2
35	3610.0003.00	AIR VALVE		1
36	0003.0038.00	PRESSURE ACCUMULATOR		1
37	1800.0033.00	DIAPHRAGM		1
38	0460.0040.00	DIAPHRAGM SUPPORT CAP		1
39	0002.0038.00	PRESSURE ACCUMULATOR		1
40	1210.0599.00	O-RING	3x22,5	1
41	1225.0029.00	PRESSURE ACCUMULATOR KIT		1
42	0415.0063.00	DELIVERY MANIFOLD		1
43	1219.0041.00	SAFETY VALVE ASSEMBLY	50 BAR	1
44	2802.0018.00	DELIVERY HOSE TAIL	8x11	1
45	1200.0038.00	WING NUT	1/2" GAS	1
46	1209.0013.00	GASKET	12x18x3	1
47	2826.0031.00	LEFT TAP	1/2-1/2 GAS	1
48	1214.0019.00	LEFT TAP ASSEMBLY		1
49	2802.0018.00	DELIVERY HOSE TAIL	8x11	1

#	PART #	DESCRIPTION	NOTE	QTY
50	1200.0038.00	WING NUT	1/2" GAS	1
51	1209.0013.00	GASKET	12x18x3	1
52	2826.0032.00	RIGHT TAP	1/2-1/2 GAS	1
53	1214.0018.00	RIGHT TAP ASSEMBLY		1
54	1210.0441.00	O-RING	2x14	1
55	3200.0121.00	PLUG	3/8 GAS	1
56	1210.0003.00	O-RING	3,0x16,3	4
57	3609.0021.00	SCREW	M10x30	8
58	2806.0032.00	DELIVERY HOSE TAIL		4
59	1205.0029.00	SUCT./DELIVERY VALVE CAGE		8
60	1802.0015.00	SPRING (WIRE 0,8)	e11x18	8
61	3604.0023.00	SUCTION/DELIVERY VAVLE		8
62	3009.0115.00	SUCT./DELIVERY VALVE SEAT		8
63	1210.0487.00	O-RING	3,53x31,34	8
64	1220.0076.00	SUCT./DEL VALVE ASSY KIT		8
65	2801.0055.00	ELBOW COUPLING	41	1
66	1200.0054.00	WING NUT	1"1/2 GAS	1
67	1210.0180.00	O-RING	3x30	1
68	3212.0040.00	SUCTION HOSE		1
69	2806.0031.00	SUCTION HOSE TAIL		4
70	2811.0002.00	WASHER	10,5x20x2	8
71	3609.0050.00	SCREW	M10x45	8
72	1210.0101.00	O-RING	2,62x29,83	16
73	3213.0026.00	SUCTION HOSE		3

#	PART #	DESCRIPTION	NOTE	QTY
80	0001.0559.00	1"3/8 MALE TO FEMALE SHAFT		1

#	PART #	DESCRIPTION	NOTE	QTY
97	5001.0071.00	PULLEY KIT	3A-p350	1
	5001.0070.00	PULLEY KIT	3A-p292	1

#	PART #	DESCRIPTION	NOTE	QTY
101	5026.0346.00	ORDINARY MAINTENANCE KIT		1